

Capital Construction Projects Update

STUCO | October 25, 2022



MISSOURI
S&T

AGENDA

- Innovation Lab
- Welcome Center
- Missouri Protoplex
- Highway 63 Pedestrian Underpass
- Q&A



HAVENER
CENTER

NORTH
QUAD

INNOVATION
LAB

WELCOME
CENTER

TOOMEY
HALL

ARRIVAL
COURT

ROLLA
BLDG

FUTURE
BIO-X

SCHRENK
HALL

INNOVATION LAB

The Innovation Lab is a facility dedicated to student innovation, imagination, creativity, and possibility thinking. It elevates the intellectual, social, and economic potential of S&T students to ensure they can meet the societal and workforce needs of today and tomorrow.

INNOVATION LAB

The Innovation Lab is the first of three major capital projects funded through the Kummer Institute Foundation Board. The Innovation Lab will be 50,000 sq. ft and feature 40 unique and new spaces.

- **IDEA Lab:** Innovation. Design. Entrepreneurship. Acceleration. The two IDEA Labs will offer a technology-rich environment that encourages cross-disciplinary collaboration, simulations and ideation.
- **Maker Spaces:** the two maker spaces will provide the resources for building and designing prototypes.
- **Active Learning Classrooms:** The four active learning classrooms will create a more engaged and collaborative approach to teaching and learning.
- **Digital Recording Studio:** The digital recording studio will provide equipment and software required to record, edit, and produce digital content.













swi
University of
North Carolina
at Charlotte

Sign up online at:
<http://shwp.mst.edu/womenindex/iged>

swi

INNOVATION LAB

- Includes a fourth central geothermal plant to serve this facility and future buildings
- Total project cost: \$37,720,750
- Construction complete: October 2023

WELCOME CENTER

The Welcome Center will be home to S&T's admission team and will greet and orient prospective students to campus. The 35,500 sq. ft. center will be located east of the existing Havener Center and future Innovation Lab.

- **Lobby and gallery:** will expose visitors to the richness of student life on campus, exceptional facilities and programs, and the remarkable achievements of alumni.
- **Welcome Center auditorium:** The auditorium will be large enough to house up to 400 students and will be used for new and perspective student orientations, summer immersion experiences, community outreach, guest lectures, and open houses.
- **Office of Enrollment Management:** Formally housed in Parker Hall, the Office of Enrollment Management will be housed in the Welcome Center. Enrollment Management is a key partner in leading the university's north star goal to increase enrollment from the current 8,000 students to 12,000.



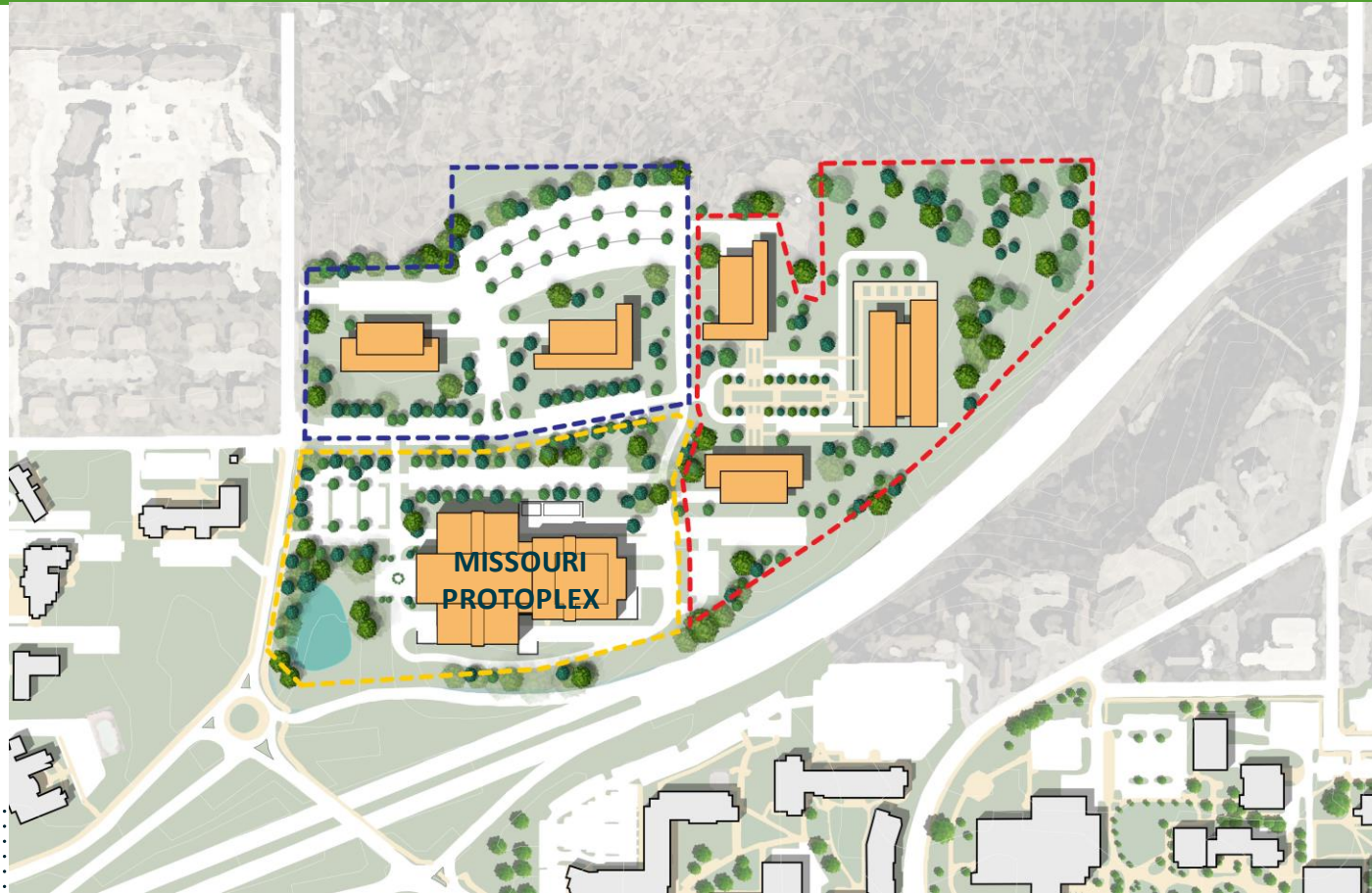




WELCOME CENTER

- Construction: July 2023 – December 2024
- Total project cost: \$25,750,000

MISSOURI PROTOPLEX



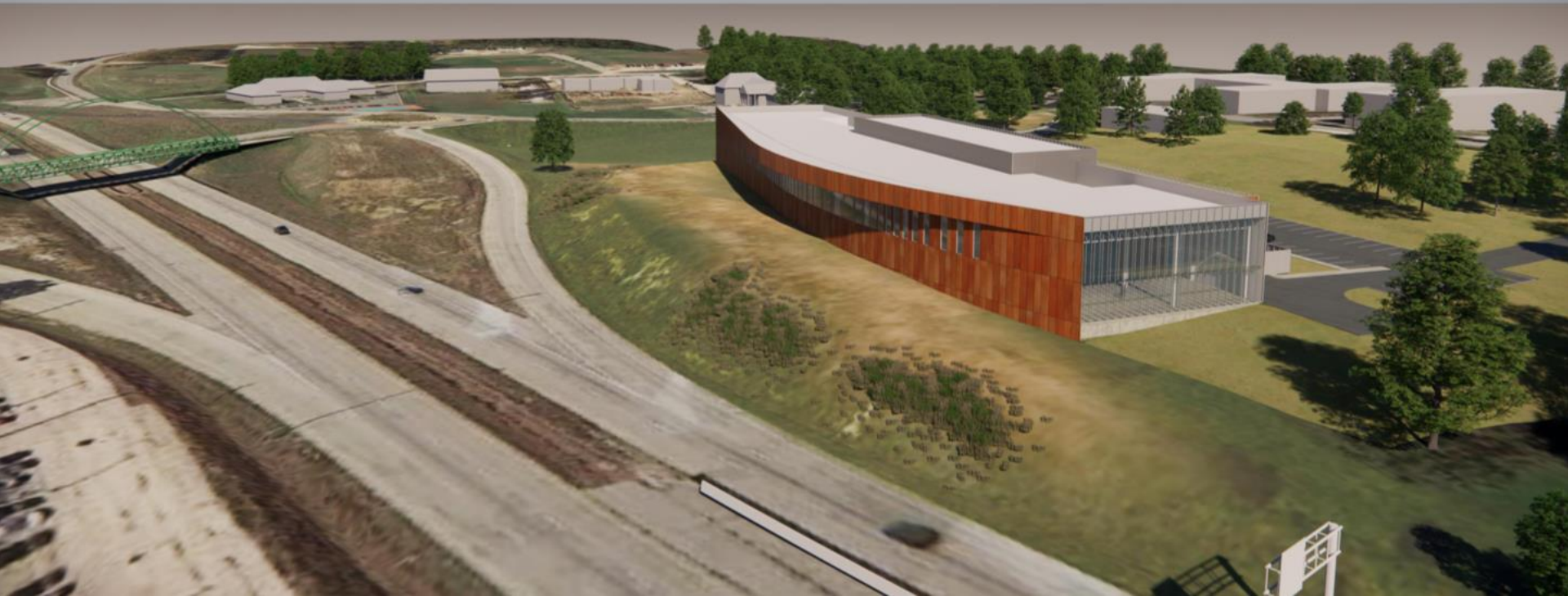
MISSOURI PROTOPLEX

The Missouri Protoplex is a 133,000 sq. ft. facility dedicated to advanced manufacturing research and development. It will feature shared spaces, equipment, and technology to enable Missouri manufacturers to create and test prototypes.

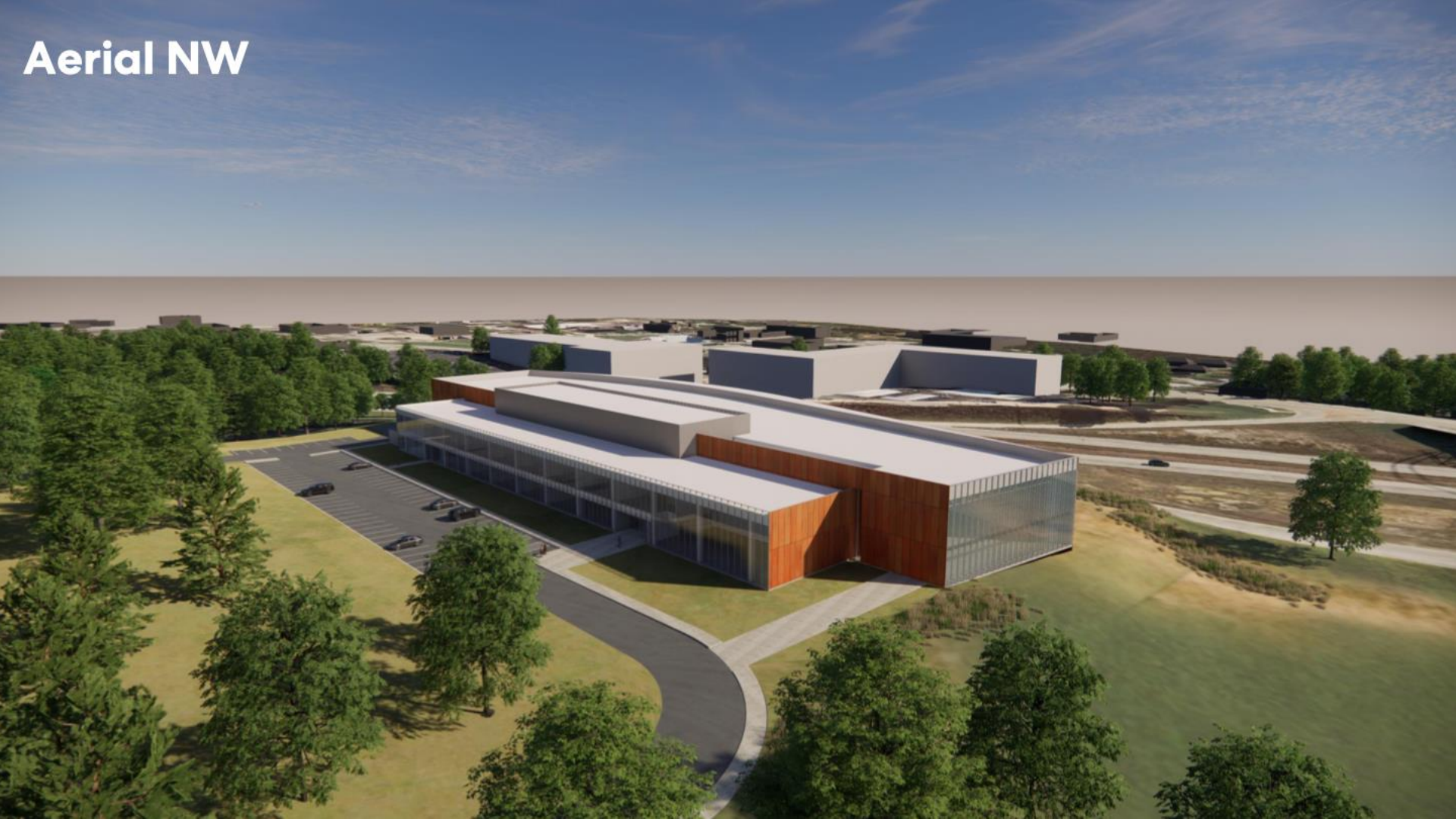
- **High bay research space:** will accommodate larger manufacturing equipment with flexible utilities and load in locations
- **Support laboratories:** such as chemistry, materials testing, computational, and quality inspection
- **Research offices:** to allow for partnerships between S&T's research centers and industry manufacturing partners who want a physical presence in the Manufacturing Technology and Innovation Campus
- **Meeting space:** to support interdisciplinary collaboration for research occurring in the facility

MINERS DIG DEEPER

Aerial SE



Aerial NW



High Bay

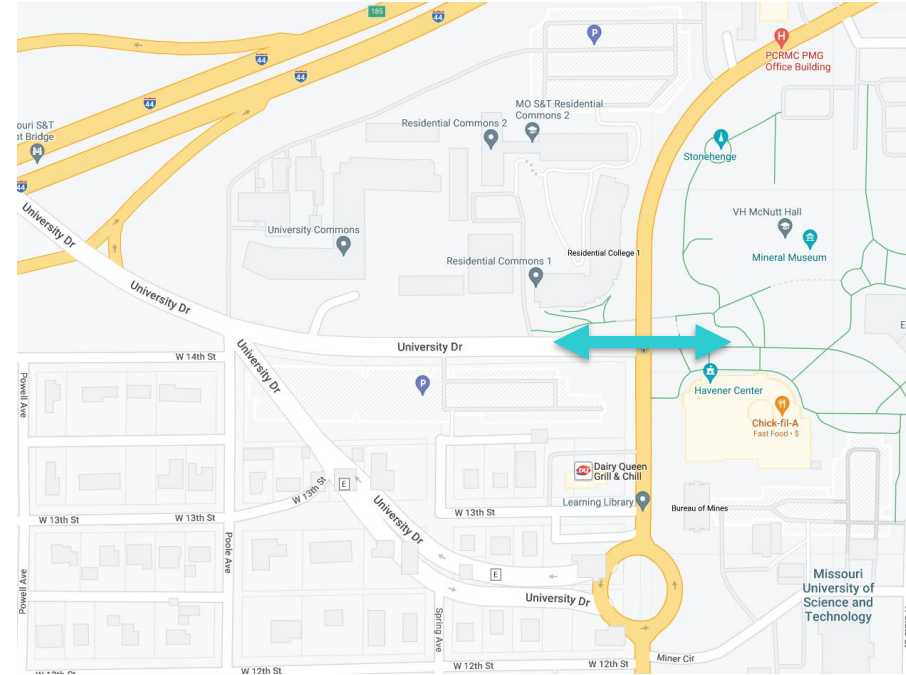


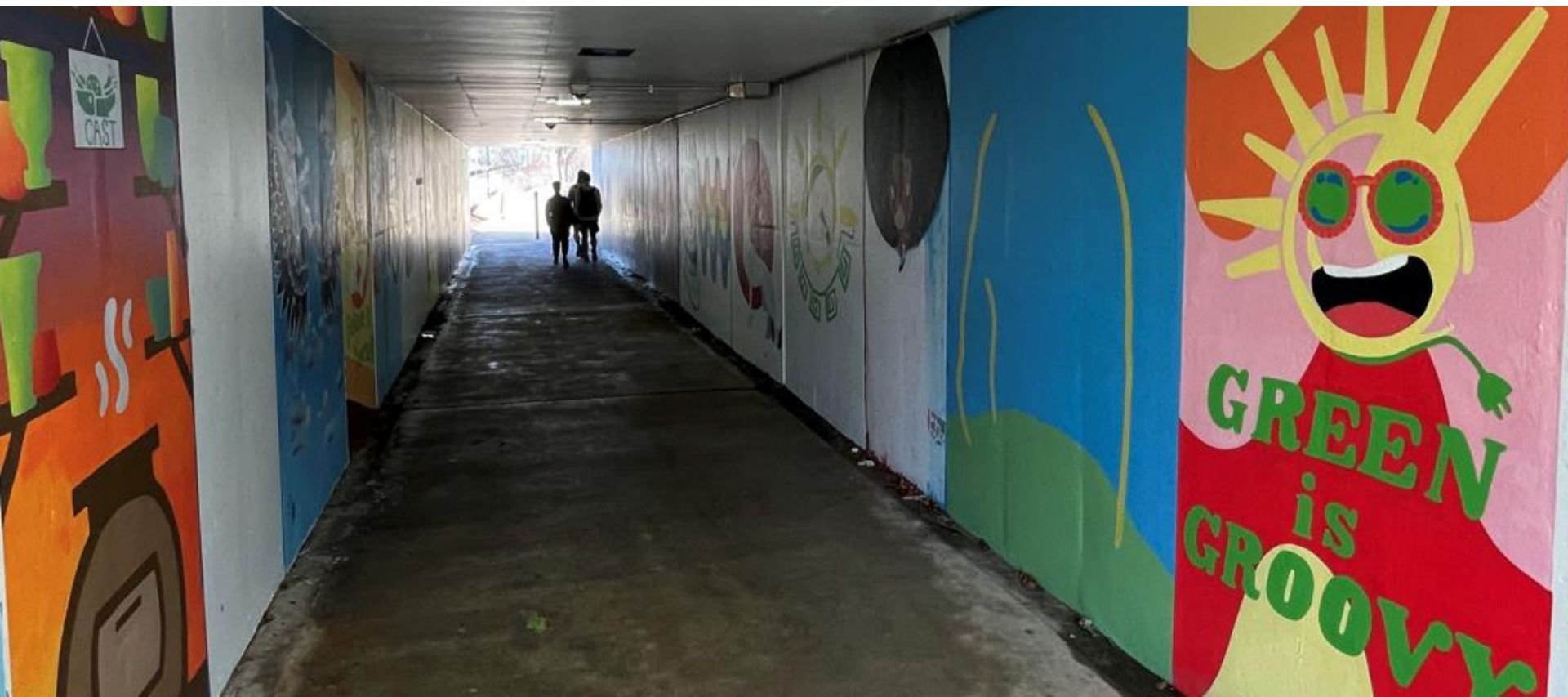
MISSOURI PROTOPLEX

- Project includes multiple enabling projects to prepare site for construction
- Construction: August 2023 – August 2025
- Total project cost: \$96,250,000

HIGHWAY 63 PEDESTRIAN UNDERPASS

- Creates a new pedestrian crossing at HWY 63 and the former University Drive (14th Street)
- The new tunnel will be taller and wider than the current tunnel with improved lighting and artwork opportunities.
- Construction scheduled beginning Summer 2023





CAST

GREEN
is
GROOVY



© 2014 McClure Group, Inc.











Questions?